



# 2012

## CANCER ANNUAL REPORT



**FLORIDA HOSPITAL  
WATERMAN**

*Cancer Institute*



# TABLE OF CONTENTS

---

|  |              |
|--|--------------|
| 2012 Cancer Committee Members.....                         | <b>3</b>     |
| Cancer Registry .....                                      | <b>4</b>     |
| Cancer Primary Site Table.....                             | <b>5</b>     |
| Top 5 Site Distributions.....                              | <b>6</b>     |
| 2009 Estimated Performance Rates.....                      | <b>6</b>     |
| About Malignant Melanoma .....                             | <b>7</b>     |
| Melanoma Cancer Data Review.....                           | <b>8-9</b>   |
| 2011 Community Education<br>and Advertising Outreach ..... | <b>10-11</b> |



# 2012 CANCER COMMITTEE MEMBERS

The Cancer Committee is the leadership body responsible for developing, implementing, evaluating and improving all cancer related activities in our program and community. The committee meets quarterly and represents physicians from radiology, pathology, medical oncology, radiation oncology and surgery as well as allied health care, administrative and supportive services professionals.

**Lou Acuff**, Hospice, Lake County

**Ahmed Al-Hazzouri**, MD, Thoracic Surgery

**Gary Allen**, MD, Thoracic Surgery

**James Barnes**, Director, Pharmacy

**Jackie Barrett**, Cancer Care Navigator

**Stephanie Bassett**, Clinical Dietitian

**Gina Becker**, ACS

**Marcus Bethea**, MD, Pathology

**Jeffrey Brabham**, MD, Radiation Oncology

**Jennette Cox**, CTR -  
Cancer Registry Coordinator

**Fran Crunk**, Vice President/  
Chief Financial Officer

**Linda Davidson**, Director,  
Case Management

**Dave DeProspero**, Director,  
Florida Hospital Waterman Cancer Institute

**Patricia Dolan**, Vice President/  
Chief Nursing Officer

**Carrie Fish**, Sr. Vice President/  
Chief Operating Officer

**Rick Golab**, Director, Cancer Center/  
Diagnostic Imaging

**Ralph Gousse**, MD, Oncology/Hematology

**Maen Hussein**, MD, Oncology/Hematology

**Dana Ikensaa**, Clinical Liaison, Hospice

**Mary Johnson**, Quality Management

**April Kaufmann**, Florida Hospital Waterman  
Foundation

**Barbara Lane**, RN, BSN, OCN -  
Clinical Research Nurse

**Becky Longanecker**, Director,  
Professional Services

**Michelle Maes**, Manager,  
Rehabilitation Institute

**Peter Marzek**, MD, Plastic Surgery

**Borys Mascarenhas**, MD, Surgical Oncology

**Karen Mathias**, Director, Medical Records

**Ken Mattison**, President/  
Chief Executive Officer

**Vinay Mehindru**, MD, Vice President/  
Chief Medical Officer

**Susan Moore**, Director, Home Care Services

**Robert Purdon**, MD, Radiation Oncology

**Faye Rose**, Director, Pastoral Care

**Jennifer Sanky**, CTR - Cancer Registry

**Seble Gabre-Madhin**, MD, FACS,  
General Surgery

**Pamela Smith**, Rehabilitation Services

**Cheryl Thaler**, RN, MSN, Director,  
Inpatient Services

**Linda Trocino**, RN, Manager, Education  
Department, Florida Hospital Waterman

**Evadne Tsolo**, MSW, Social Worker,  
Florida Hospital Waterman Cancer Institute

**Rohan Watson**, MD, Radiology

**Bonnie Zimmerman**, Director,  
Marketing and Communications

# CANCER REGISTRY

The Cancer Registry was established in 1993 at the Florida Hospital Waterman Cancer Institute (FHWCI). Since then, the registry has collected and reported statistical cancer data to both the Florida Cancer Database and the National Cancer Databases (NCDB) totaling 15,880 analytic cases. The data is used for the purpose of research, education and outcome measures. The data collected include demographic, diagnostic, stage of disease, treatment and morbidity. In the last five years (2006 – 2010) the FHWCI Cancer Registry collected and reported 7,250 cases.

In 2011, the five most prevalent cancer sites for cases reported are as follows:

- Breast – 161
- Lung – 157
- Colon – 62
- Prostate – 87
- Lymphoma – 41

One of the primary goals of the Cancer Registry is the lifetime follow-up of cancer patients. The process is to contract physicians to find out the status of the cancer patients and to remind patients to have regular examinations and medical supervision to ensure early detection and treatment of a reoccurrence or diagnosis of subsequent cancer. Our follow-up rate continues to exceed the national standard of 80%, now at 90% for five-year-survival and 89% for all analytic cases overall.

The Cancer Registry staff attends annual educational conferences both locally and nationally in order to keep up with the changes and management of the registry data collection, as well as, the changes in technology and medicine.

The staff of the Registry would like to express their sincere gratitude to physicians and their staff for responding promptly to follow-up letters. Your input continues to enhance the quality of our data that is shared with a broader audience. The staff would also like to thank the Florida Hospital Waterman Medical Staff and Administration, FHWCI staff and the remarkable volunteers for all your commitment and support to the Registry.

For more information please contact Jennette Cox at (352) 253-3611, email: [Jennette.Cox@ahss.org](mailto:Jennette.Cox@ahss.org) or Jennifer Sanky at (352) 253-3613, email: [Jennifer.Sanky@ahss.org](mailto:Jennifer.Sanky@ahss.org)



# CANCER PRIMARY SITE TABLE

## PRIMARY SITE TABULATION FOR 2011-CANCER-CASES

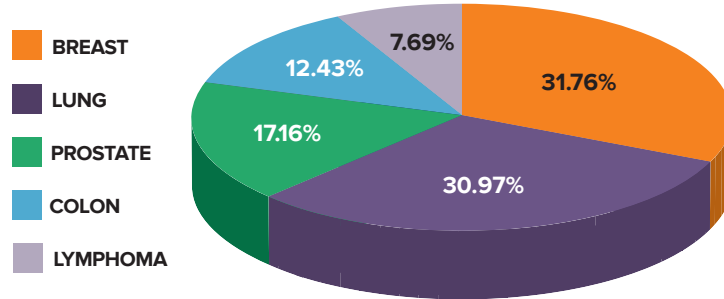
| PRIMARY SITE                   | TOTAL      | CLASS      |            | SEX        |            | AJCC STAGE GROUP |            |            |            |            |           |            |
|--------------------------------|------------|------------|------------|------------|------------|------------------|------------|------------|------------|------------|-----------|------------|
|                                |            | A          | N/A        | M          | F          | 0                | I          | II         | III        | IV         | UNK       | N/A        |
| <b>ALL SITES</b>               | <b>889</b> | <b>669</b> | <b>220</b> | <b>441</b> | <b>448</b> | <b>54</b>        | <b>204</b> | <b>163</b> | <b>110</b> | <b>142</b> | <b>80</b> | <b>136</b> |
| <b>ORAL CAVITY</b>             | <b>22</b>  | <b>17</b>  | <b>5</b>   | <b>17</b>  | <b>5</b>   | <b>0</b>         | <b>3</b>   | <b>2</b>   | <b>1</b>   | <b>14</b>  | <b>1</b>  | <b>1</b>   |
| Lip                            | 2          | 2          | 0          | 1          | 1          | 0                | 1          | 1          | 0          | 0          | 0         | 0          |
| Tongue                         | 6          | 5          | 1          | 6          | 0          | 0                | 2          | 0          | 1          | 2          | 1         | 0          |
| Oropharynx                     | 1          | 1          | 0          | 1          | 0          | 0                | 0          | 0          | 0          | 1          | 0         | 0          |
| Hypopharynx                    | 0          | 0          | 0          | 0          | 0          | 0                | 0          | 0          | 0          | 0          | 0         | 0          |
| Other                          | 13         | 9          | 4          | 9          | 4          | 0                | 0          | 1          | 0          | 11         | 0         | 1          |
| <b>DIGESTIVE SYSTEM</b>        | <b>131</b> | <b>105</b> | <b>26</b>  | <b>70</b>  | <b>61</b>  | <b>5</b>         | <b>20</b>  | <b>34</b>  | <b>25</b>  | <b>25</b>  | <b>19</b> | <b>3</b>   |
| Esophagus                      | 10         | 6          | 4          | 8          | 2          | 0                | 0          | 3          | 3          | 1          | 3         | 0          |
| Stomach                        | 11         | 10         | 1          | 6          | 5          | 0                | 3          | 2          | 2          | 4          | 0         | 0          |
| Colon                          | 62         | 54         | 8          | 33         | 29         | 3                | 10         | 16         | 15         | 9          | 9         | 0          |
| Rectum                         | 18         | 16         | 2          | 10         | 8          | 2                | 5          | 3          | 2          | 6          | 0         | 0          |
| Anus/Anal Canal                | 4          | 3          | 1          | 1          | 3          | 0                | 0          | 3          | 0          | 0          | 1         | 0          |
| Liver                          | 8          | 4          | 4          | 4          | 4          | 0                | 0          | 2          | 1          | 1          | 3         | 1          |
| Pancreas                       | 11         | 7          | 4          | 3          | 8          | 0                | 2          | 3          | 0          | 4          | 2         | 0          |
| Other                          | 7          | 5          | 2          | 5          | 2          | 0                | 0          | 2          | 2          | 0          | 1         | 2          |
| <b>RESPIRATORY SYSTEM</b>      | <b>170</b> | <b>137</b> | <b>33</b>  | <b>94</b>  | <b>76</b>  | <b>1</b>         | <b>42</b>  | <b>16</b>  | <b>36</b>  | <b>65</b>  | <b>7</b>  | <b>3</b>   |
| Nasal/Sinus                    | 0          | 0          | 0          | 0          | 0          | 0                | 0          | 0          | 0          | 0          | 0         | 0          |
| Larynx                         | 11         | 9          | 2          | 9          | 2          | 1                | 6          | 2          | 1          | 1          | 0         | 0          |
| Lung/Bronchus                  | 157        | 126        | 31         | 85         | 72         | 0                | 36         | 14         | 33         | 64         | 7         | 3          |
| Other                          | 2          | 2          | 0          | 0          | 2          | 0                | 0          | 0          | 2          | 0          | 0         | 0          |
| <b>BLOOD &amp; BONE MARROW</b> | <b>76</b>  | <b>31</b>  | <b>45</b>  | <b>48</b>  | <b>28</b>  | <b>0</b>         | <b>0</b>   | <b>0</b>   | <b>0</b>   | <b>0</b>   | <b>0</b>  | <b>76</b>  |
| Leukemia                       | 37         | 17         | 20         | 24         | 13         | 0                | 0          | 0          | 0          | 0          | 0         | 37         |
| Multiple Myeloma               | 13         | 4          | 9          | 7          | 6          | 0                | 0          | 0          | 0          | 0          | 0         | 13         |
| Other                          | 26         | 10         | 16         | 17         | 9          | 0                | 0          | 0          | 0          | 0          | 0         | 26         |
| <b>BONE</b>                    | <b>2</b>   | <b>0</b>   | <b>2</b>   | <b>0</b>   | <b>2</b>   | <b>0</b>         | <b>1</b>   | <b>0</b>   | <b>0</b>   | <b>0</b>   | <b>1</b>  | <b>0</b>   |
| <b>CONNECT/SOFT TISSUE</b>     | <b>8</b>   | <b>4</b>   | <b>4</b>   | <b>4</b>   | <b>4</b>   | <b>0</b>         | <b>2</b>   | <b>2</b>   | <b>0</b>   | <b>1</b>   | <b>3</b>  | <b>0</b>   |
| <b>SKIN</b>                    | <b>40</b>  | <b>27</b>  | <b>13</b>  | <b>28</b>  | <b>12</b>  | <b>6</b>         | <b>13</b>  | <b>4</b>   | <b>3</b>   | <b>1</b>   | <b>11</b> | <b>2</b>   |
| Melanoma                       | 37         | 24         | 13         | 25         | 12         | 5                | 12         | 4          | 3          | 1          | 11        | 1          |
| Other                          | 3          | 3          | 0          | 3          | 0          | 1                | 1          | 0          | 0          | 0          | 0         | 1          |
| <b>BREAST</b>                  | <b>161</b> | <b>142</b> | <b>19</b>  | <b>18</b>  | <b>143</b> | <b>31</b>        | <b>61</b>  | <b>37</b>  | <b>17</b>  | <b>4</b>   | <b>11</b> | <b>0</b>   |
| <b>FEMALE GENITAL</b>          | <b>44</b>  | <b>29</b>  | <b>15</b>  | <b>0</b>   | <b>44</b>  | <b>0</b>         | <b>5</b>   | <b>6</b>   | <b>16</b>  | <b>9</b>   | <b>8</b>  | <b>0</b>   |
| Cervix Uteri                   | 8          | 8          | 0          | 0          | 8          | 0                | 0          | 2          | 5          | 1          | 0         | 0          |
| Corpus Uteri                   | 19         | 15         | 4          | 0          | 19         | 0                | 5          | 2          | 5          | 2          | 5         | 0          |
| Ovary                          | 16         | 5          | 11         | 0          | 16         | 0                | 0          | 2          | 5          | 6          | 3         | 0          |
| Vulva                          | 0          | 0          | 0          | 0          | 0          | 0                | 0          | 0          | 0          | 0          | 0         | 0          |
| Other                          | 1          | 1          | 0          | 0          | 1          | 0                | 0          | 0          | 1          | 0          | 0         | 0          |
| <b>MALE GENITAL</b>            | <b>88</b>  | <b>58</b>  | <b>30</b>  | <b>88</b>  | <b>0</b>   | <b>0</b>         | <b>22</b>  | <b>47</b>  | <b>5</b>   | <b>3</b>   | <b>11</b> | <b>0</b>   |
| Prostate                       | 87         | 58         | 29         | 87         | 0          | 0                | 21         | 47         | 5          | 3          | 11        | 0          |
| Testis                         | 1          | 0          | 1          | 1          | 0          | 0                | 1          | 0          | 0          | 0          | 0         | 0          |
| Other                          | 0          | 0          | 0          | 0          | 0          | 0                | 0          | 0          | 0          | 0          | 0         | 0          |
| <b>URINARY SYSTEM</b>          | <b>42</b>  | <b>34</b>  | <b>8</b>   | <b>30</b>  | <b>12</b>  | <b>11</b>        | <b>12</b>  | <b>8</b>   | <b>0</b>   | <b>5</b>   | <b>6</b>  | <b>0</b>   |
| Bladder                        | 32         | 25         | 7          | 24         | 8          | 11               | 6          | 8          | 0          | 2          | 5         | 0          |
| Kidney/Renal                   | 9          | 8          | 1          | 5          | 4          | 0                | 5          | 0          | 0          | 3          | 1         | 0          |
| Other                          | 1          | 1          | 0          | 1          | 0          | 0                | 1          | 0          | 0          | 0          | 0         | 0          |
| <b>BRAIN &amp; CNS</b>         | <b>24</b>  | <b>19</b>  | <b>5</b>   | <b>12</b>  | <b>12</b>  | <b>0</b>         | <b>0</b>   | <b>0</b>   | <b>0</b>   | <b>0</b>   | <b>0</b>  | <b>24</b>  |
| Brain (Benign)                 | 1          | 0          | 1          | 0          | 1          | 0                | 0          | 0          | 0          | 0          | 0         | 1          |
| Brain (Malignant)              | 14         | 11         | 3          | 8          | 6          | 0                | 0          | 0          | 0          | 0          | 0         | 14         |
| Other                          | 9          | 8          | 1          | 4          | 5          | 0                | 0          | 0          | 0          | 0          | 0         | 9          |
| <b>ENDOCRINE</b>               | <b>16</b>  | <b>16</b>  | <b>0</b>   | <b>2</b>   | <b>14</b>  | <b>0</b>         | <b>11</b>  | <b>0</b>   | <b>2</b>   | <b>0</b>   | <b>0</b>  | <b>3</b>   |
| Thyroid                        | 13         | 13         | 0          | 0          | 13         | 0                | 11         | 0          | 2          | 0          | 0         | 0          |
| Other                          | 3          | 3          | 0          | 2          | 1          | 0                | 0          | 0          | 0          | 0          | 0         | 3          |
| <b>LYMPHATIC SYSTEM</b>        | <b>41</b>  | <b>30</b>  | <b>11</b>  | <b>20</b>  | <b>21</b>  | <b>0</b>         | <b>12</b>  | <b>7</b>   | <b>5</b>   | <b>15</b>  | <b>2</b>  | <b>0</b>   |
| Hodgkin's Disease              | 3          | 3          | 0          | 3          | 0          | 0                | 1          | 0          | 1          | 1          | 0         | 0          |
| Non-Hodgkin's                  | 38         | 27         | 11         | 17         | 21         | 0                | 11         | 7          | 4          | 14         | 2         | 0          |
| <b>UNKNOWN PRIMARY</b>         | <b>22</b>  | <b>19</b>  | <b>3</b>   | <b>10</b>  | <b>12</b>  | <b>0</b>         | <b>0</b>   | <b>0</b>   | <b>0</b>   | <b>0</b>   | <b>0</b>  | <b>22</b>  |
| <b>OTHER/ILL-DEFINED</b>       | <b>2</b>   | <b>1</b>   | <b>1</b>   | <b>0</b>   | <b>2</b>   | <b>0</b>         | <b>0</b>   | <b>0</b>   | <b>0</b>   | <b>0</b>   | <b>0</b>  | <b>2</b>   |

Number Of Cases Excluded: 2

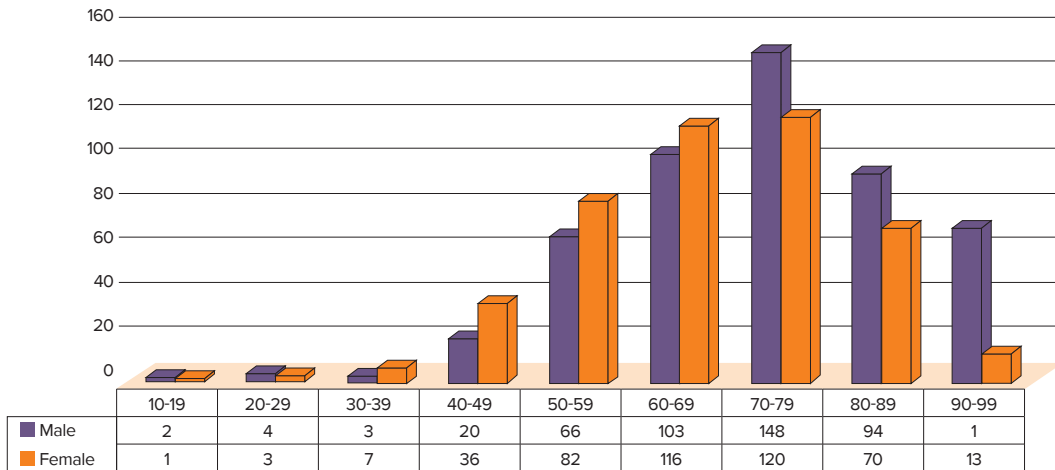
This Report Excludes Ca In-Situ Cervix Cases, Squamous And Basal Cell Skin Cases, And Intraepithelial Neoplasia Cases

# SITE DISTRIBUTION

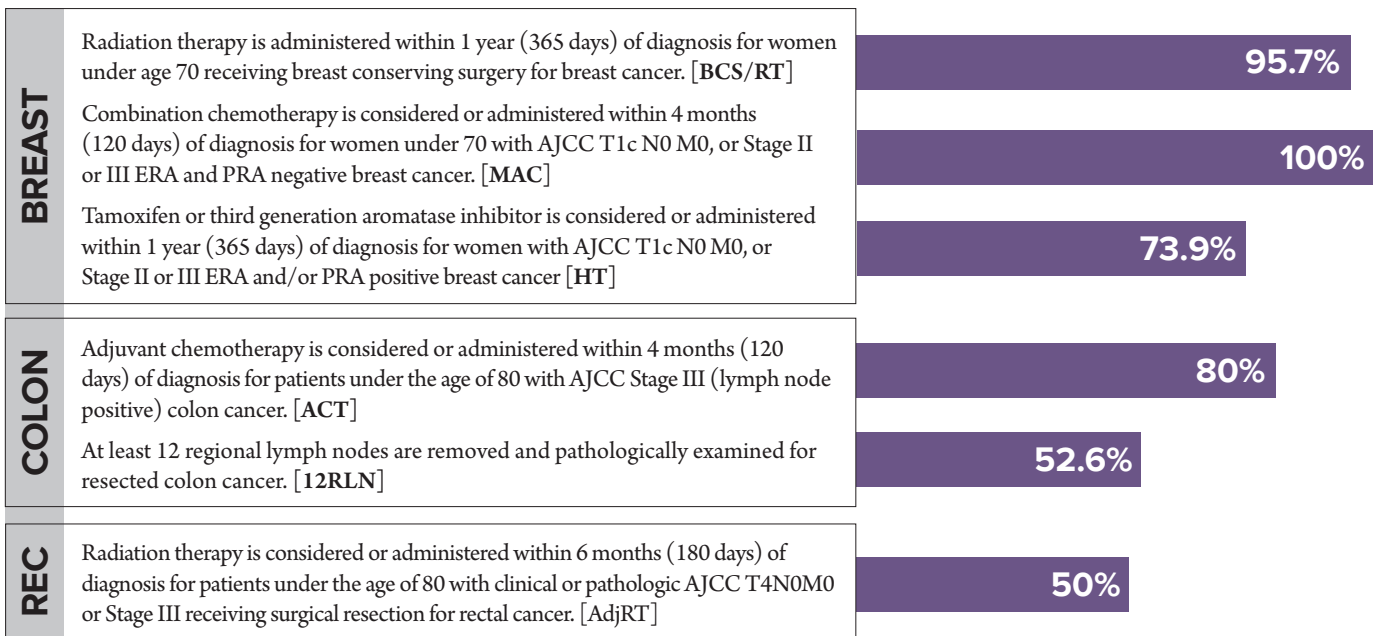
## 5 MOST PREVALENT CANCER SITES - 2011



## SITE DISTRIBUTION BY AGE GROUP/ SEX



## 2009 ESTIMATED PERFORMANCE RATES





# ABOUT MALIGNANT MELANOMA

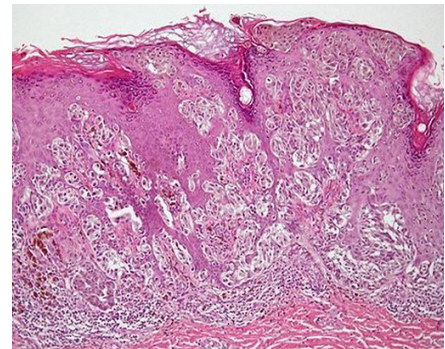
Malignant melanoma is the most dangerous type of skin cancer, and is the leading cause of death from skin disease.

These tumors arise from melanocytes, the cell responsible for producing melanin pigment. Skin is by far the most common site of origin of these tumors, but they can also occasionally arise in other sites including the eye, oral cavity, esophagus, and anus. The incidence of malignant melanoma has increased significantly over the last few decades. This is due in large part to increased early detection of melanoma, but there also appears to have been a true increase for reasons not clearly understood. The role of sun exposure is commonly accepted as critical in the etiology of melanoma, but controversies remain in regards to what roles accumulated sun exposure or the use of sunscreens play. It appears that a history of intermittent sun exposure with episodes of bad sunburn, red or blonde hair, numerous freckles, and a tendency towards to burn or tan poorly are all factors that imply an increased risk.

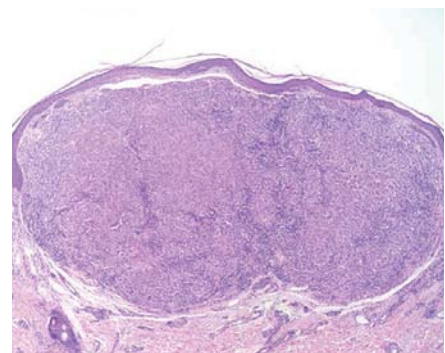
Melanomas can be divided into several types. The most common type is superficial spreading melanoma (50-75%), which may develop on any part of the body and at any age (melanomas rarely arise in childhood). Nodular melanomas (15-35%) arise as polypoid or nodular lesions without a pre-existing “flat” phase. Lentigo maligna melanomas (5-15%) arise from pre-existing lesions called lentigo maligna or Hutchinson’s freckle which are irregularly pigmented and flat and usu-

ally occur on the face or sun-exposed areas of upper extremities in elderly people. Less common variants include acral lentiginous melanomas (5-10%), which develop on the palms or soles or beneath fingernails or toenails and are particularly common in black or Asian patients; and desmoplastic melanomas (rare), which usually present on the head or neck as firm plaque-like areas or bulky firm tumors and are often non-pigmented.

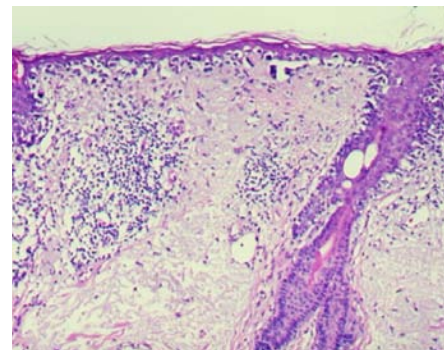
The most important prognostic factor for melanoma is the thickness of the tumor (Breslow thickness). This is measured from the top of the granular layer of the epidermis to the deepest tumor cell. Melanomas measuring less than 0.76 mm in thickness are regarded as “thin” melanomas, and these had a 96% 5-year survival rate in one large pooled study. Staging of melanomas is based in large part on thickness, and survival rates decrease in thicker tumors. Other important prognostic factors include the presence or absence of ulceration and the mitotic rate.



Superficial Spreading Melanoma



Nodular Melanoma



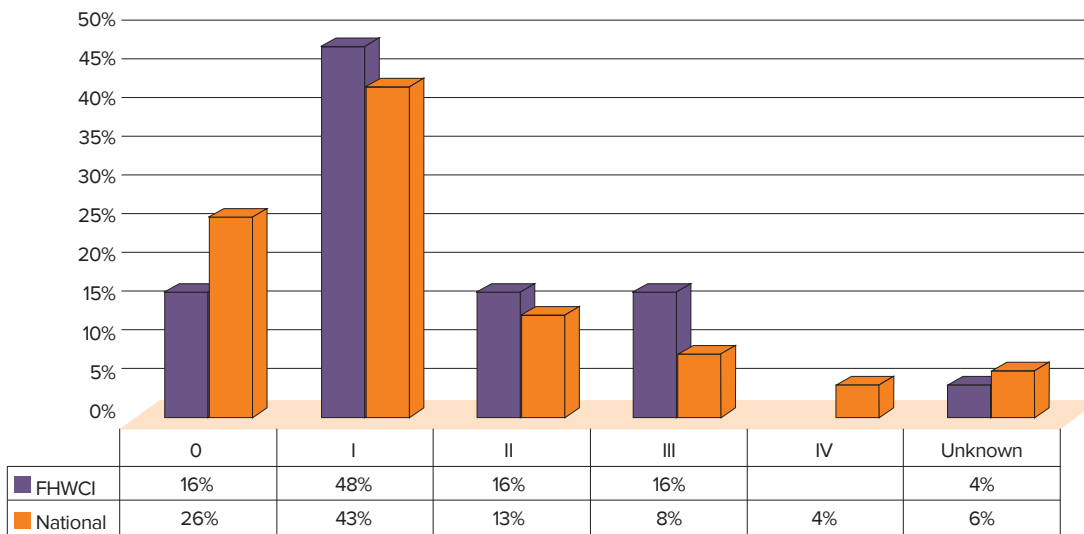
Lentigo Maligna Melanoma

Melanomas can be divided into several types. The most common type is superficial spreading melanoma (50-75%), which may develop on any part of the body and at any age (melanomas rarely arise in childhood).

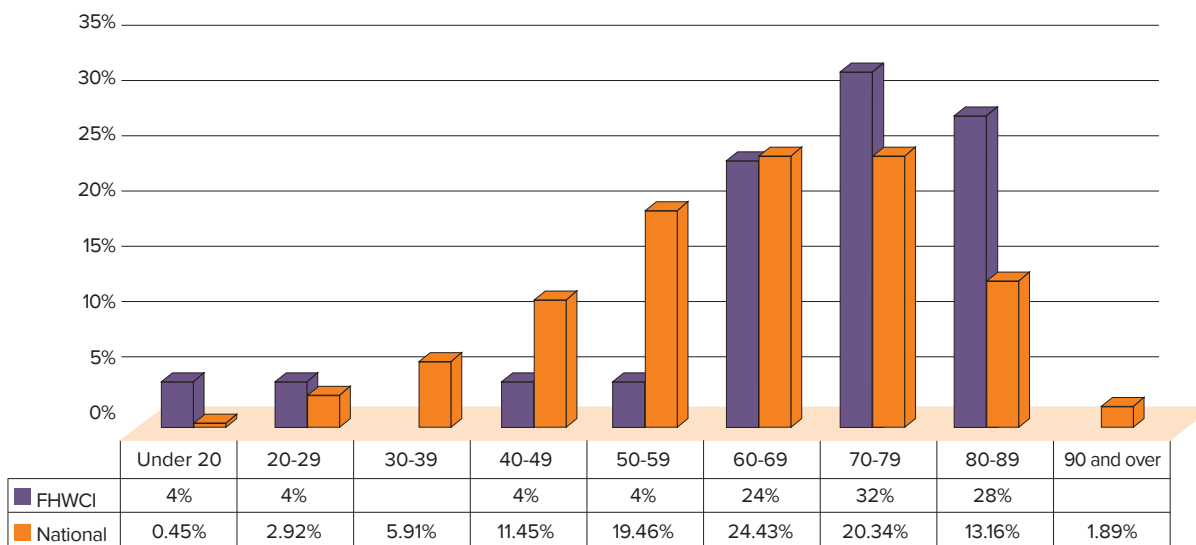
# 2011 MELANOMA SKIN CANCER CASES STATISTICS

The following figures demonstrate the quality of care provided at Florida Hospital Waterman Cancer Institute. It is a privilege to serve the cancer needs of Lake County and Florida Hospital Waterman Cancer Institute will continue to review and improve the processes necessary to provide patients with the best oncology care possible.

## STAGES OF MELANOMA SKIN CANCER DIAGNOSED IN 2011

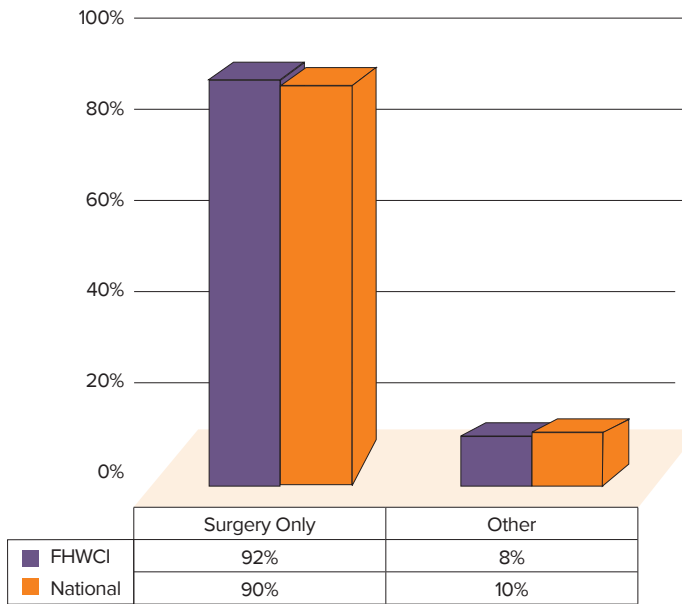


## AGE GROUP OF MELANOMA SKIN CANCER DIAGNOSED IN 2011

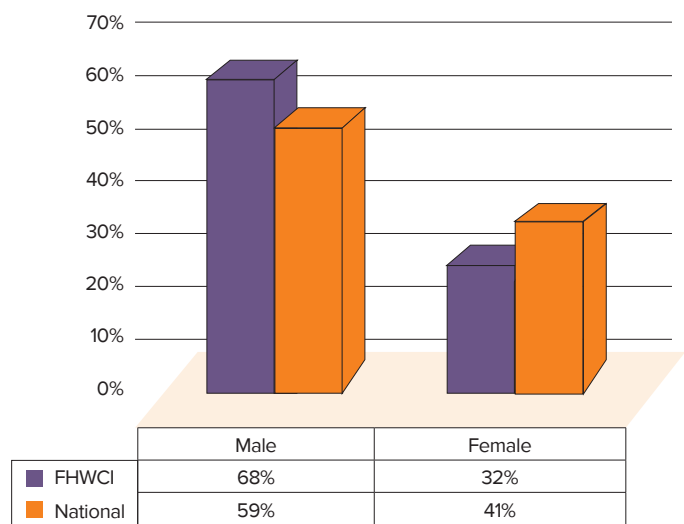




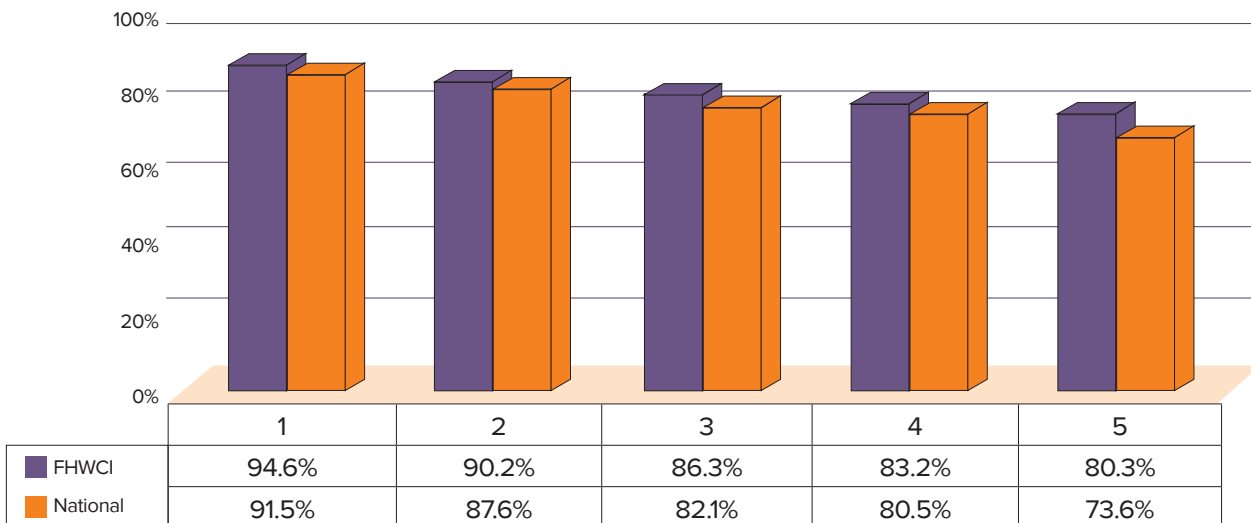
## FIRST COURSE TREATMENT OF MELANOMA SKIN CANCER DIAGNOSED IN 2011



## GENDER OF MELANOMA SKIN CANCER DIAGNOSED IN 2011



## FIVE YEAR SURVIVAL RATE OF MELANOMA SKIN CANCER (2003-2006)



# 2011 COMMUNITY EDUCATION AND ADVERTISING OUTREACH

## JANUARY

- Jan. 12: Community health fair, Highland Lakes of Leesburg
- Jan. 17: First Baptist Church of Eustis “50 Days of Fitness” open to Lake County Public School employees and family
- Jan. 20: Community and employee health fair, Waterman Village, Mount Dora
- Jan. 24: “Senior Life Expo: Passport to Good Living,” Lake Receptions, Mt. Dora
- Jan. 25-31: “Uterine Cancer,” Chris Stanley, MD, LFTV (Comcast channel 22, Bright House 199, FI Cable 4)
- Jan. 28: Community health fair, Pennbrook Fairways of Leesburg.

## FEBRUARY

- Feb. 1 Feb. 4 Feb. 8
  - Community health fair, Scottish Highlands of Leesburg
  - Community health fair, Water Oaks of Lady Lake Sponsor “C’s for Cancer” annual survivor dinner
- Feb. 15 Feb. 17 Feb. 18 Feb. 19
- Feb. 8-14: “Colon Cancer”, Borys Mascarenhas, MD, LFTV (Comcast channel 22, Bright House 199, fi Cable 4)
- Community health fair, Hawthorne of Leesburg
- Community health fair, Mid Florida Lakes of Leesburg.
- Community health fair, Plantations of Leesburg. Sponsor ACS Cattle Baron’s Ball
- Tri-County Health and Medical Directory full-page ad

## MARCH

- Mar. 4: “Healthy Living Expo,” Savannah Center in The Villages.
- Mar. 9: Dining with the Doctor “Abnormal Pap Smear” Ericka Stone, MD
- Back cover Healthy Living Magazine
- Lake Magazine back cover

## APRIL

- Apr. 1: Dining with the Doctor, “Clinical Trials,” Ahmed Al-Hazzouri, MD
- Apr. 8: Community & resident health fair, Waterman Cove, Tavares
- Apr. 12: Community & employee health fair, Hospice, Clermont
- Apr. 13: Medical Seminar, “Cancer Update: What’s Real, What’s Not”, Mean Hussein, MD, Royal Highlands, Leesburg
- Back cover Healthy Living Magazine
- Lake Magazine back cover
- Sponsor ACS Relay For Life

## MAY

- May 3-9: “Abnormal Pap Smear”, Ericka Stone, MD, LFTV (Comcast channel 22, Bright House 199, fi Cable 4)
- May 4: Dining with the Doctor, “SBRT,” Jeff Brabham, MD
- May 6: Community & employee health fair, Town of Lady Lake
- May 6: Exclusively for Women’s Expo, Leesburg
- May 20: “Staying Healthy in Mind and Body Expo,” The Villages
- Back cover Healthy Living Magazine

- Back cover Lake Magazine
- Health and Wellness full-page ad and advertorial

## JUNE

- Jun. 2: Daily Commercial front page article, “High tech team fights cancer”
- Jun. 9: Sterling House Medical News, “Breast Cancer Awareness,” Jackie Barrett, RN
- Jun. 16: Dining with the Doctor, “Cancer Update and a Look at Clinical Trials,” Maen Hussein, MD
- Jun. 27: Central Florida YMCA “Get Moving Lake!” community health and wellness fair
- Jun. 28-Jul. 4: “SBRT”, Jeffrey Brabham, MD, LFTV (Comcast Channel 22, Bright House 199, FI Cable 4)
- Waterman Writings: Multidisciplinary Tumor Board
- Back cover Healthy Living Magazine
- Back cover Lake Magazine
- Health and Wellness full-page ad and advertorial

## JULY

- Back cover Healthy Living Magazine
- Back cover Lake Magazine
- Style Magazine full-page ad and full-page advertorial

## AUGUST

- Aug. 18: Dining with the Doctor, “Skin Cancer”, Robert Purdon, MD
- Aug. 10: Lake County Schools Staff Development “New Beginnings” teacher orientation

- Aug. 23-29: “Clinical Trials”, Maen Hussein, MD, LFTV (Comcast Channel 22, Bright House 199. FI Cable 4)
- Daily Commercial “Newcomers Guide” full-page ads (2)
- Back cover Healthy Living Magazine
- Style Magazine full-page ads (2)

## SEPTEMBER

- Sept. 6: Dining with the Doctor, “Abnormal Bleeding Signal Endometrial or Cervical Cancer?” Ericka Stone, MD
- Sept. 27: Active Aging Expo, Lake Port Square
- Back cover Healthy Living Magazine Style Magazine full-page ads (2) Daily Commercial “Healthy Living” full-page ad Villages Daily Sun “Newcomers Guide” full-page ad Patient Resource Guide and Breast Cancer Guide expanded listing and photo

## OCTOBER

- Oct. 3: Second Annual “Pinking Ceremony” featuring Ramaswami Krishnan, MD and Borys Mascarenhas, MD
- Oct. 13: Red Hat Luncheon, Lake Receptions
- Oct. 19: City of Mt. Dora Healthy and Benefit Fair
- Oct. 20: Dining with the Doctor, “Breast Health,” Sebby Gabre-Mahdin, MD
- Oct. 20: LSCC Peoples Medical School, “Causes and Treatments for Stomach Cancer,” Maen Hussein, MD

- Oct. 20: LSCC Peoples Medical School, “Causes and Treatments for Pancreatic Cancer,” Ahmed Al-Hazzouri, MD
- Oct. 26: City of Eustis Health and Benefit Fair
- Oct. 28: Women’s Expo, The Villages
- Back cover Healthy Living Magazine
- Style Magazine full-page ads (2)
- Daily Commercial “Welcome Back” full-page ad

## NOVEMBER

- Nov. 3: Living Well Expo, Lakes of Leesburg
- Nov. 3: Dining with the Doctor, “Stomach Cancer,” Maen Hussein, MD

- Nov. 4: The Villages Fall Expo
- Nov. 7: Living Well Expo, Continental Country Club
- Nov. 10: Lake Sumter Medical Society Expo
- Nov. 15-21: “Skin Cancer”, Robert Purdon, MD, LFTV (Comcast channel 22. Bright House 199. FI cable 4)

## DECEMBER

- Dec. 8: FHW Annual Holiday Health Fair
- Dec. 27-Jan. 2: “Breast Health”, Seble Gabre-Madhin, MD, LFTV (Comcast channel 22. Bright House m, fi Cable 4)
- Style Magazine “Clinical Trials” advertorial







**FLORIDA HOSPITAL**  
**WATERMAN**

---

*Cancer Institute*

4000 Waterman Way, Tavares, FL 32778  
(352) 253-3600  
FHWaterman.com